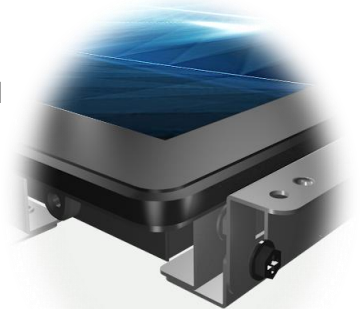


Overview

The TRE series embedded open frame touch monitors with multi-point (10 points) projected capacitive (PCAP) touch screen deliver an industrial-grade & reliable solution with wide-angle viewing, outstanding image clarity & accurate touch response that is cost-effective for OEMs and systems integrators. Embedded eye-catching & rugged bezel with edge-to-edge glass and ultra-thin & ultra-narrow edge structure design with patent delivers flat design self-service terminals with high durability and scratch & water resistance. Landscape, portrait and face-up orientation ensures flexible mounting possibilities in almost any installation. Our TR series product line is available in a wide range of sizes, offering the versatility needed for commercial kiosk applications from self-service and gaming to industrial automation, digital signage & healthcare.



Features

Embedded Design

Edge-to-edge glass design ensures seamless and flat integration

Easy to Use

Plug & play, flexible video input interface

Full HD

1920 x 1080 resolution

Reliable and Professional Design

Elegant design with metal structure & plastic front bezel delivers outstanding image clarity

Touch Through Enabled with PCAP

Accurate 10 points touch responses support touch through a front layer of glass with thickness's up to 5mm.

Multi-touch

Support Windows multi-touch protocol

Supported OS

Windows 7 /10, Android , Linux, Mac OS X

Flexible Mounting

Different mounting holes & external brackets making flexible mounting possibilities in almost any installation

Specifications

■ Display

| | |
|-------------------|-----------------------|
| LED Panel | IPS, 27inch |
| Backlight | E-LED (edge-lit) |
| Viewable Area | 597.6 (H) x336 (V) |
| Brightness | 300cd/m2 |
| Contrast Ratio | 1000:1 |
| Viewing Angle | 178° H/V |
| Response Time | 12ms (GTG) |
| Number of Colors | 16.7M |
| Native Resolution | 1920x1080 (16:9), FHD |
| Video Frequency | 60Hz |
| Video Interface | VGA x1 / HDMI x1 |
| Input Resolution | 1920 x 1080 @ 60Hz |

■ Touch

| | |
|------------------|---|
| Touch Points | 10 (HID, only with supported OS) |
| Touch Technology | Projective Capacitive (PCAP) |
| Touch Method | Finger, glove (latex) Active & passive stylus pen |
| Glass Overlay | tempered glass Optional AG / AR surface finish |
| Water Resistance | Support touch in water fog and light rain Little drops of water will not cause drift |
| Calibration | No need calibration tools |
| Response Time | 16ms |
| Report Rate | >100Hz |
| Touch Interface | USB (Type B) x1 |
| Supported OS | Win 7 / 10 / Android / Linux / Mac |

■ OSD Function

| | |
|---------------|--------------------------------------|
| OSD Controls | 5 buttons |
| OSD Languages | CN, EN, FR, IT, DE ES, KR, RU, PT |

■ Mechanical

| | |
|-------------------|---|
| Product Dimension | 649.5x 393.7x 42.4mm |
| Packing Dimension | 779x 520 x 210mm (1 PCS) 801x 535 x 322mm(4 PCS) |
| Weight(approx.) | 8.5kg / 11.5kg/37.5kg |
| Wall Mount Method | VESA,MIS-D,100x100/200*100mm, Y,4,90 |

■ Power

| | |
|---------------|-----------------------------------|
| Power Supply | DC in: DC 12V, connector: 5.5*2.5 |
| Typical Power | ≤ 32W (typ.) |
| Standby Power | ≤ 0.5 W (typ.) |

■ Environmental

| | |
|-----------------|------------------------|
| Operating T & H | 0 °C ~ 50 °C, 90% RH |
| Storage T & H | -20 °C ~ 60 °C, 90% RH |

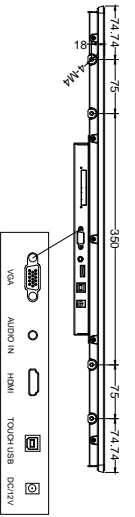
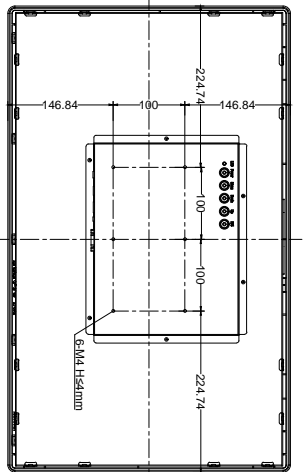
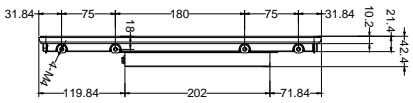
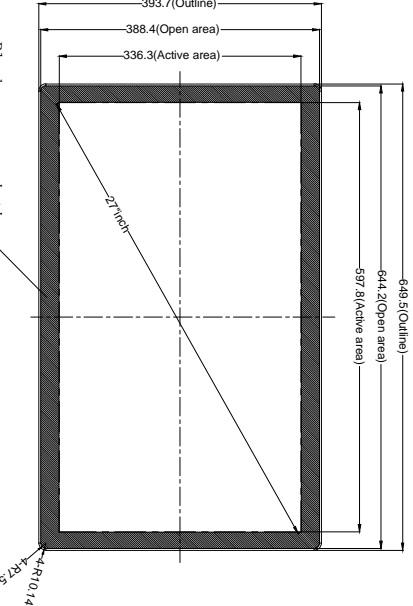
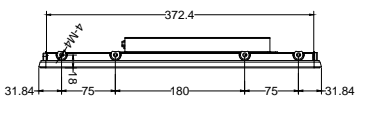
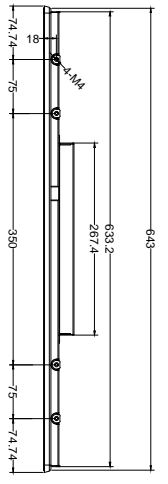
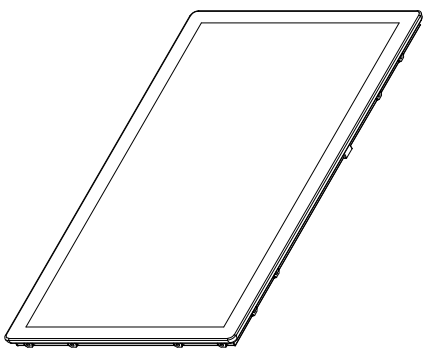
■ Accessories

| | |
|-------------------|---|
| External Speakers | L/R 4 pin red & black amplifier connector |
| Android Board | RK3188/3368/3288/3399 for optional |
| Adapter | AC-DC, AC 100~240V 50/60hz DC 12V 3A, 5.5*2.5*10mm |

■ Other

| | |
|---------------|------------------------|
| Ready for Use | 24/7 |
| Warranty | 1 Year |
| Regulations | CCC, CE, FCC, CB, RoHS |





| Dimension Range | Tolerance (mm) |
|-----------------|----------------|
| Under 25 mm | 0.1 |
| 25.1-100 mm | 0.2 |
| 100.1-250 mm | 0.4 |
| 250.1-400 mm | 0.8 |
| 400.1-500 mm | 1.5 |
| 500.1-630 mm | 2.0 |
| 630.1-800 mm | 2.5 |

TOLERANCING

UNLESS OTHERWISE SPECIFIED ALL DIMS ARE mm

. x ±0.2

RADIUS ±0.15

. xx ±0.1

ANGLES ±0.5°

DO NOT SCALE DRAWING

Title:

design:

date:

Scale: NTS

page: 1 of 2

VER: 01



| | | |
|-----|------|----|
| Rev | Date | by |
| | | |
| | | |
| | | |

A

B

A

B

