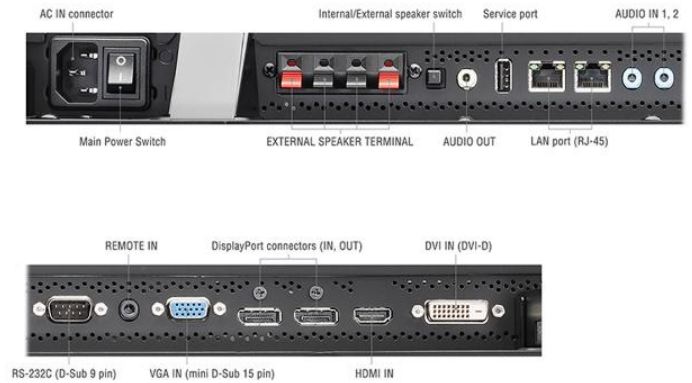
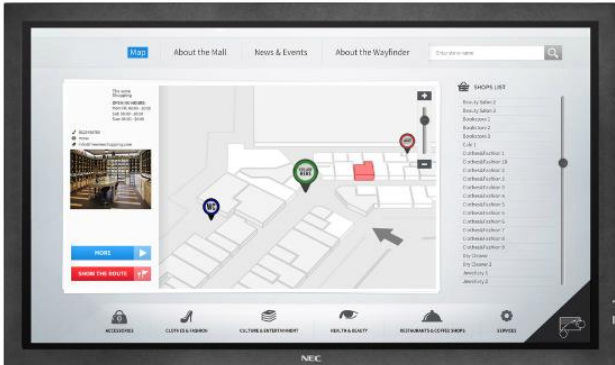


MultiSync® P553 SST (ShadowSense)
NEC LCD 55" Professional Large Format Touch Display

Datasheet



NEC MultiSync® P553 SST - The Navigation System for Digital Wayfinding

For interactive and way finding kiosks, a positive user experience is essential in order to maintain customer satisfaction. An intuitive and user-friendly touch behaviour is crucial to eliminate frustration and allow the user to concentrate on finding his way and not on the technology.

The 55" P553 SST 10-point-touch display intelligently ignores accidental touches yet provides accurate and reliable touch performance even in high ambient light to facilitate an eye-pleasing touch experience.

For interactive wayfinding signage, this solution perfectly serves the visitor whilst increasing the ROI and securing the investment into a brighter future.

Benefits

Avoid Touch Frustration – satisfy users with the highest touch point accuracy, filtering out misleading touch-sizes and avoiding ghost touches even in high ambient light operation.

Resistive and Endurance Design – the protection glass resists vandalism and provides 24/7 customer usage.

Seamless Touch Integration – work hand-in-hand with multi-touch applications while using the 10 touch points of ShadowSense™ touch technology in real-time collaboration.

Simple Plug & Play – no need to install any drivers on the host PC for all major operating systems.

Ease of Use – enhance the display with an optional “Windows based” Slot-in-PC using the integrated Ultra High Resolution OPS option slot, thereby simplifying installations and reducing the points of failure.

Cost Saving Device Management – save effort whilst managing all connected NEC devices from a centralised location by using the NaViSet Administrator 2 software tool.

Product Information

Product Name	MultiSync® P553 SST (ShadowSense)
Product Group	NEC LCD 55" Professional Large Format Touch Display
Order Code	60003769

Display

Panel Technology	S-PVA with edge LED backlights
Screen Size [inch/cm]	55 / 138.8
Brightness [cd/m ²]	550, (700 max)
Contrast Ratio (typ.)	4000:1
Viewing Angle [°]	178 horizontal / 178 vertical (typ. at contrast ratio 10:1)
Haze Level [%]	44
Supported Orientation	Face Up; Landscape; Portrait

Synchronisation Rate

Horizontal Frequency [kHz]	31.5 - 91.1 (analog and digital)
Vertical Frequency [Hz]	50 - 85

Resolution

Native Resolution	1920 x 1080 at 60 Hz
Supported on DisplayPort and HDMI	3840 x 2160 (24/30 Hz); 1920 x 1080; 1600 x 1200; 1360 x 768; 1280 x 1024; 1280 x 768; 1080i; 1080p; 1024 x 768; 800 x 600; 720p (50/60 Hz); 640 x 480; 576p (50 Hz); 480p (60 Hz)
Supported on HDMI only	4096 x 2160 (24 Hz); 3840 x 2160 (25 Hz); 1360 x 768; 576i (50 Hz); 480i (60 Hz)

Connectivity

Input Video Analogue	1 x D-sub 15 pin
Input Video Digital	1 x DisplayPort (with HDCP); 1 x DVI-D (with HDCP); 1 x HDMI (with HDCP)
Input Audio Analogue	2 x 3,5 mm jack
Input Audio Digital	1 x HDMI; DisplayPort
Input Control	LAN 100Mbit; remote control wire (3,5mm jack); RS232
Output Video Digital	1 x DisplayPort; 1 x DVI-D; 1 x HDMI; 1 x Interface Extension Slot; 1 x OPS; 1 x through DisplayPort out
Output Audio Analogue	3,5mm jack
Output Control	LAN 100Mbit
Remote Control	LAN with SNMP; Remote Control IR (internal/external (optional) sensor); RS-232C (9-pin D-sub) Input

OPS Option Slot

Slot Technology	Open pluggable specification (NEC / Intel OPS standard)
Inrush Current [A]	max. 10
Power Consumption [W]	max. 61
Voltage / Current [V/A]	16/4

Interface Extension Slot

Slot Technology	analogue and digital interface extension (NEC standard)
-----------------	---

Sensors

Ambient Light Sensor	Integrated, triggered actions programmable
Temperature Sensor	Integrated, 3 sensors, triggered actions programmable

Electrical

Power Consumption [W]	150 Eco (shipment setting), 212
Power Savings Mode [W]	< 0.5 (ECO Standby); < 1
Power Management	VESA DPMS

Environmental Conditions

Operating Temperature [°C]	+0 to +35
Operating Humidity [%]	20 to 80

Mechanical

Dimensions (W x H x D) [mm]	Without stand: 1,328 x 789 x 79.1
Weight [kg]	Without stand: 37
Bezel Width [mm]	40 (left and right); 40 (top and bottom)
VESA Mounting [mm]	300 x 300 (FDMI); 4 holes; M6
Ingress Protection	IP40 (front); IP20 (back)

Glass

Thickness [mm]	4
Type	Premium toughened glass, single sided anti-reflective coating
Light Transmission [%]	92 (+/- 2 %)
Haze Level [%]	9 (+/- 2 %)

Touch

Touch Technology	ShadowSense™ Touch
Number of Touches	Real multi-touch up to 10 touches
Response Time [ms]	6 to 8
Touch Active Area (W x H) [mm]	1,247.35 x 708.71
Touch Method	Finger; Gloves; Stylus (≥ 4 mm)
Operating System	Native Multi-Touch: Windows 7, Windows 8, Windows 10, Linux, Android; Default Mouse: Windows XP, Windows Vista, Mac OS X
Data Interface	USB 2.0 (full speed) HID; USB powered, plug & play
Accuracy [mm]	< 1.5
Touch Resolution	12-bit (4096 x 4096)
Ambient Light Rejection	Up to full sunlight (approx. 100000 lux)

Additional Features

Special Characteristics	Auto ID assignment; Auto tiling function; Automatic Alarm E-Mails; DICOM support; HTTP Server; Image flip; NaViSet Administrator 2; Point Zoom Function; Programmable 10-bit LUT with 3 memory banks; Sticky Note Function in OSD; User readable log function
Colour Versions	Black Front Bezel, Black Back Cabinet
Safety and Ergonomics	CE; RoHS
Audio	Integrated Speakers (10 W + 10 W); Optional Speakers (15 W + 15 W)
Shipping Content	CD-ROM (User Guides/Manuals); Display; DVI-D cable; Power Cable; Remote Control; USB cable
Warranty	3 years warranty incl. backlight; additional services available; optional 4. + 5. year warranty extension
Operating Hours	24/7

Available Options

Accessories	Feet (ST-5220); Speaker (SP-TF1, SP-RM1); Trolley (PD02MHA, PD03MHA, PDMHM-L); Wall mount (PD02W T M L, PD03W T M P, PD02WHA)
Interface Extension	SB3-AB1 analogue: Audio; Component; Composite; S-Video SB3-AB2 analogue: Audio; RGBHV SB3-DB1 digital: 2 x HDMI
OPS	HD-SDI 1.5G, 3G; HDBaseT receiver; OPS Digital Signage Player; Slot-inPC (Intel® Core i5/i7 with WS7P recommended)

Green Features

Energy Efficiency	Ambient light sensor; Annual energy consumption: 219 kWh (based on 4 operating hours per day); Carbon savings meter; ECOMode; Energy efficiency class: B; LED backlight
Ecological Materials	Manuals on CD; Optional feet



This document is © 2016 NEC Display Solutions Europe GmbH.

All rights reserved in favour of their respective owners. All hardware and software names are brand names and/or registered trademarks of the respective manufacturers. All specifications are subject to change without notice. Errors and omissions are excepted. 07.09.2016