

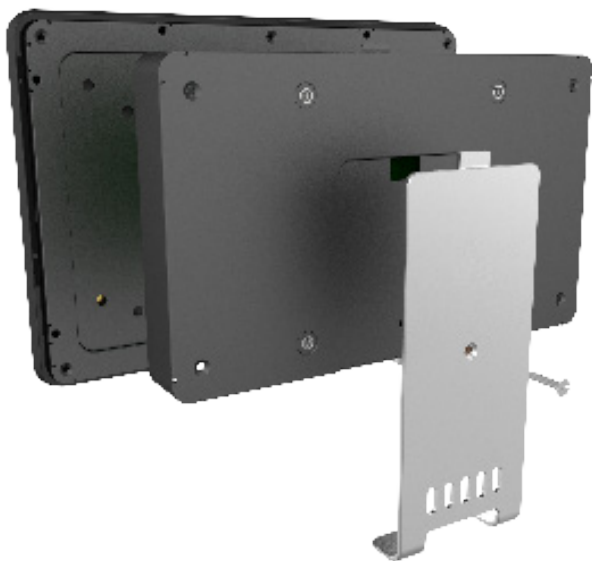
# Element M10-OF

10" Open Frame Touch Monitor

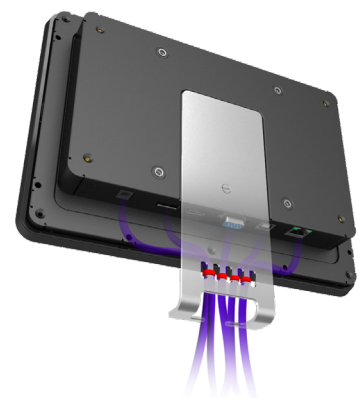


Element M10-OF is an IP65 commercial grade open frame touch monitor. The 10.1" Full Flat Touch Screen LCD Digital monitor has a contrast screen of 1300:1 and its slim bezel free design and 1280 x 800 resolution ensure the sharpest of images.

With 10 point multi touch monitor and I/O's including HDMI, VGA and USB, the M10-OF is suitable for many applications and multi roles such as Digital Signage Display / Information Display, Self-Check In and Self-Check Out, or Self Service Terminals (Self Ordering).



VESA MOUNT 100 X 100MM



CONVENIENT CABLE MANAGEMENT

# Technical Specifications - Element M10-OF

| Item                        | Parameter  |  |
|-----------------------------|--|--|
| Size                        | 10.1" TFT LCD  |  |
| Maximum Resolution          | 1280 x 800   |  |
| Contrast Ratio              | 1300:1   |  |
| Brightness (Backlight Type) | 500 nits (No Touch), 425 nits (Projected Capacitive)                                 |  |
| View Angle                  | H:170°, V:170°   |  |
| Touch LCD Display           | Touch Type   | Projected Capacitive                               |
|                             | Touch Points   | 10   |
|                             | Touch Screen Interface   | USB-HID (Type B)                                   |
| I/O Port                    | USB Port   | 1 x USB 2.0 (Type B) for Touch Interface (USB-HID) |
|                             | Video Port   | 1 x VGA (DB15), 1x DP, 1 x HDMI                    |
|                             | Audio Port   | 1 x Audio-Out                                      |
|                             | Remote Control Port  | 1 x RJ-45 for Remote Key                           |
|                             | Power Input  | 1 x 12V DC Jack with Lock                          |
| Physical Properties         | Power Supply   | 36W (12V@3A) External Power Adaptor                |
|                             | Housing Colour   | Black  |
|                             | Material   | Glass, Plastic (ABS), SECC Metal                   |
|                             | Dimensions (W x H x D) mm  | 260.7 x 183.4 x 39.4                               |
|                             | Ingress Protection   | Front Side IP65 Compliant                          |
|                             | Net Weight (kg)  | 1.4 kg   |
|                             | Gross Weight (kg)  | 2.4 kg   |
|                             | Carton (W x H x D) mm  | 310 x 160 x 370                                    |
|                             | VESA   | 100 x 100 mm                                       |
|                             | Ball Drop / IK   | UL60950(500g/1.3m) and IK08                        |
| Safety                      | Certifications   | CE (B), FCC Class B, CCC (B), UL, cUL, RCM, RoHS   |
| Environment                 | Operating Temperature / Humidity   | 0°C ~ 50°C, 20% ~ 80% RH. Non-Condensing           |
|                             | Storage Temperature / Humidity   | -20°C ~ 60°C, 10% ~ 95% RH. Non-Condensing         |
| Optional Peripherals        | Remote Key   | 1 x RJ-45 (for OSD connector)                      |
| Warranty                    | 36 Months  |  |
| Interface                   |  |  |

*\*Specifications may change without notification (E&OE)*